

CHJH 精汇阀门
JINGHUI VALVE

**PROFESSIONAL MANUFACTURER
OF STAINLESS STEEL VALVE**

不锈钢阀门专业制造商



品牌理念

| 愿景 | 力争成为最优质的阀门制造企业

| 使命 | 凝聚我们的力量，收获明日的辉煌

| 价值观 | 成就客户，竭尽全力，说到做到



ABOUT US 关于我们

浙江精汇阀门有限公司地处中国阀门城，交通便利，物流快捷。是集科技制造、销售、服务于一体的通用阀门企业。多年来经过我们不断努力，企业步入预定轨道，向规模化、标准化、信息化快速发展。公司技术力量雄厚，生产工艺先进，制造设备精良，检测设备完善，售后服务到位。让客户真正体验到和我们合作安心放心。且建立了较先进的企业管理系统和完善的质量保证体系。

公司主要生产球阀、硬密封球阀、偏心半球阀、闸阀、截止阀、止回阀、Y型过滤器、三通球阀、旋塞阀、片式阀门、丝扣阀门、蝶阀、针型阀等，还可按照客户图纸加工定做各种非标阀门系列。阀门的材料有不锈钢、碳钢等。执行机构可选配蜗轮传动、气动、电动、液动、气液联动、电液联动以及实现自动化控制。产品适用于石油、天然气、化工、电站、冶金、国防、制药、皮革等行业与长输管线等工程。

公司始终秉承“以管理规范为基础，以市场需求为导向，以保证质量求生存，以客户满意为宗旨，以产品创新促发展”的经营宗旨，追求严格的质量管理，除按照ANSI/ASME、API、ISO、GB/JB、JIS、DIN、BS等标准制造检验外，还要通过更加严格的企业标准进行检验，同时以具有竞争性的价格满足你的需要。

精汇阀门以卓越的品质在全国各地享有盛誉，颇受用户信赖。公司还通过国家多项认证，为产品品质打下坚实基础。公司以领先的技术与管理带给您质量的保证；我们始终遵循“追求无止境”和“一切为用户”的经营宗旨，愿以“质优价廉、优势互补、互惠互利”的原则，竭诚欢迎国内外新老客户来公司参观指导。与您携手合作，共创辉煌。

Zhejiang Jinghui Valve Co., Ltd. is located in China Valve City, with convenient transportation and fast logistics. We are a general valve enterprise that integrates technology manufacturing, sales, and service. Over the years, through our continuous efforts, the enterprise has entered the predetermined track and rapidly developed towards scale, standardization, and informatization. The company has strong technical strength, advanced production technology, sophisticated manufacturing equipment, complete testing equipment, and excellent after-sales service. Let customers truly experience the peace of mind and peace of cooperation with us. And a relatively advanced enterprise management system and a comprehensive quality assurance system have been established.

The company mainly produces ball valves, hard sealed ball valves, eccentric half globe valves, gate valves, globe valves, check valves, Y-shaped filters, three-way ball valves, plug valves, disc valves, threaded valves, butterfly valves, needle valves, etc. It can also process and customize various non-standard valve series according to customer drawings. The materials of valves include stainless steel, carbon steel, etc. The actuator can be equipped with worm gear transmission, pneumatic, electric, hydraulic, pneumatic hydraulic linkage, electro-hydraulic linkage, and achieve automation control. The product is suitable for industries such as petroleum, natural gas, chemical, power plant, metallurgy, national defense, pharmaceuticals, leather, and long-distance pipeline engineering.

The company always adheres to the business philosophy of "based on management norms, guided by market demand, striving for survival through quality assurance, customer satisfaction, and promoting development through product innovation", pursuing strict quality management. In addition to manufacturing and inspecting according to ANSI/ASME, API, ISO, GB/JB, JIS, DIN, BS and other standards, it also needs to pass more stringent enterprise standards for inspection, and meet your needs at competitive prices.

Jinghui Valve enjoys a high reputation for excellent quality throughout the country and is highly trusted by users. The company has also obtained multiple national certifications, laying a solid foundation for product quality. The company provides you with quality assurance through leading technology and management; We always adhere to the business philosophy of "pursuing endless" and "everything for the user", and are willing to welcome new and old customers from home and abroad to visit and guide our company based on the principles of "high quality and low price, complementary advantages, and mutual benefit". Working hand in hand with you to create brilliance together.

APPLICATION AREA 应用领域

产品广泛应用于电厂、石油、化工、药业、煤气、食品、纸业、给排水、空调、管道系统等领域。

精汇阀门本着“品质第一、用户至上、创新科技、诚信合作”的经营理念，以完美的产品结构，优质的产品品质，富有竞争力的产品价格和优良的售后服务，期待与您真诚合作！

The products are widely used in fields such as power plants, petroleum, chemical, pharmaceutical, gas, food, paper, water supply and drainage, air conditioning, and pipeline systems.

Jinghui valve adheres to the business philosophy of "quality first, user first, innovative technology, and honest cooperation". With a perfect product structure, high-quality product quality, competitive product prices, and excellent after-sales service, we look forward to sincere cooperation with you!



石油
OIL



化工
CHEMICAL



电力
ELECTRICITY



天然气
NATURAL GAS



新能源
NEW ENERGY



制药
PHARMACEUTICAL



冶金
METALLURGY



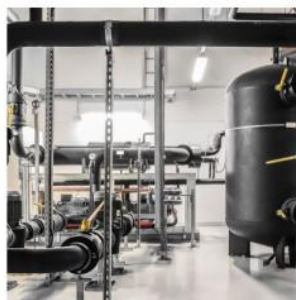
建筑
BUILDING



水处理
WATER TREATMENT



造纸
PAPERMAKING



MARKETING NETWORK 营销网络

战略合作 STRATEGY COOPERATION

精汇是您值得信赖的合作伙伴
广大的忠实客户
是企业发展的基石

“诚实、守信、开拓、进取”是企业的经营理念
与客户共同进步是我们追求的目标！

Jinghui is your trusted partner
A large number of loyal customers
It is the cornerstone of enterprise development
Honesty, trustworthiness, pioneering, and enterprising "is the business philosophy of the enterprise
Our goal is to progress together with our customers!

美国
USA

巴西
Brazil

产品远销美国，德国，意大利，新加坡，加拿大，墨西哥，日本，韩国，马来西亚，印度尼西亚，南非，巴西以及中东等国际市场。

Our products are exported to international markets such as the United States, Germany, Italy, Singapore, Canada, Mexico, Japan, South Korea, Malaysia, Indonesia, South Africa, Brazil, and the Middle East.



可靠的产品与服务



持续研发创新



全面智能运维解决方案



全球化布局

BALL VALVE SERIES

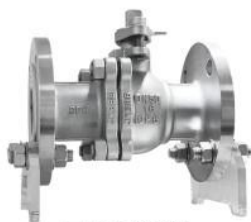
球阀系列



国标法兰球阀
GB Flange ball valve



日标法兰球阀
JIS Flange ball valve



国标法兰球阀
GB Flange ball valve



高平台球阀
High platform ball valve



一体式高温球阀
One-piece high temperature ball valve



三通球阀
The 3-way ball valve



气动法兰球阀
Pneumatic flange ball valve



保温球阀
Insulation ball valve



V型球阀
V-shaped ball valve



涡轮浮动球阀
Turbine floating ball valve



涡轮固定球阀
Turbine fixed ball valve



电动薄型球阀
Electric light-weight ball valve



电动球阀
Electric ball valve

GATE VALVE SERIES

闸阀系列



国标闸阀
National standard gate valves



国标闸阀
National standard gate valves



美标闸阀
American standard gate valve



美标闸阀
American standard gate valve



焊接闸阀
Welding gate valves



暗杆闸阀
Non-rising stem gate



保温闸阀
Insulated gate valves



日标闸阀
Japanese standard gate valves



气动闸阀
Pneumatic valve

GLOBE VALVE SERIES

截止阀系列



国标截止阀
National standard globe valve



国标截止阀
National standard globe valve



日标截止阀
Japanese standard globe valve



美标截止阀
American standard cut-off valve



波纹管截止阀
Bellows globe valve



焊接截止阀
Welding stop valve



氧气截止阀
The oxygen valve



抗生素波纹管截止阀
Antibiotic bellows globe valve



保温截止阀
Insulation cut-off valve

CHECK VALVE/FILTER SERIES

止回阀/过滤器系列



旋启式止回阀
Swing check valve



Y型过滤器
Y-type filter



美标止回阀
ANSI Check valve



立式止回阀
Vertical check valve



消声止回阀
Silencing check valve



对夹止回阀
Wafer check valve



对夹止回阀
Wafer check valve



焊接止回阀
Welding check valve



国标旋启式止回阀
GB Swing check valve



国标升降式止回阀
GB Lift check valve



美标过滤器
ANSI Filter



T型过滤器
T Typefilter



篮式过滤器
Basket strainer



底阀
Bottom valve